

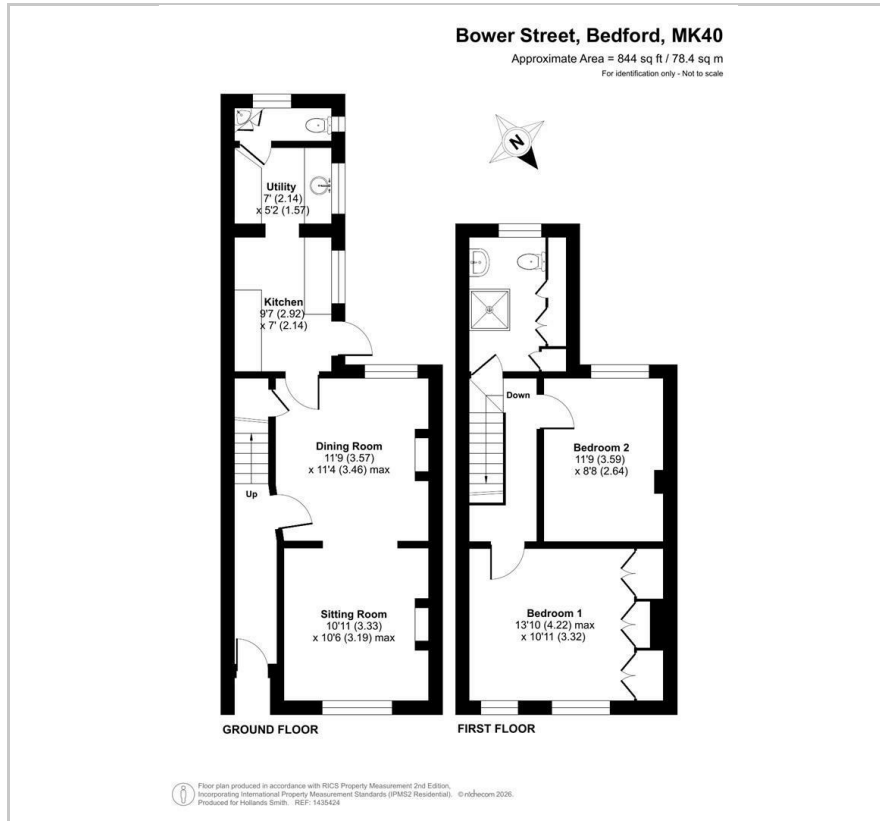


**118 Bower Street**

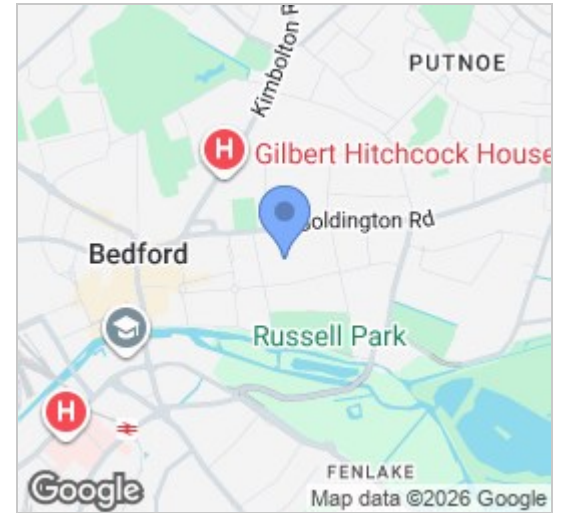
, Bedford, MK40 3QZ

**£350,000**

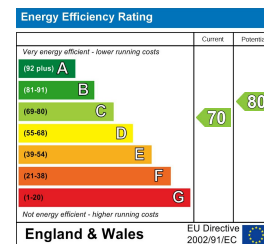
## Floor Plan



## Area Map



## Energy Efficiency Graph



## Viewing

Please contact our Bedford Office on 01234 216612 if you wish to arrange a viewing appointment for this property or require further information.



This is a well-maintained and attractive period home, situated in the heart of the Castle Road area, ideally located for a wide range of local amenities. Providing a popular layout, the accommodation includes a living room with both dining and cosy sitting areas, a kitchen with plenty of storage and workspace as well as a useful ground floor WC. There are two double bedrooms, one with built in wardrobes and cupboards and a and a the spacious first floor shower room ahs a modern suite. All of the windows are uPVC double glazed and there is gas to radiator heating throughout. Outside, the larger than typical garden extends to around 40' in depth and enjoys a sunny west facing aspect. Available with no upward chain.

The popular 'Castle Quarter' of the town has a good choice of specialist shops, cafes and restaurants as well as two well-used pubs. The area is also home to Russell Park, The Embankment and other facilities such as the well-regarding Castle Newnham Primary School. Bedford town centre is a short walk away and offers a wider choice of shops and, for the commuter, fast rail links into London St Pancras. EER: C



**163 Castle Road, MK40 3RT**

**Tel: 01234 216612**

**[www.hollandsmith.co.uk](http://www.hollandsmith.co.uk)**